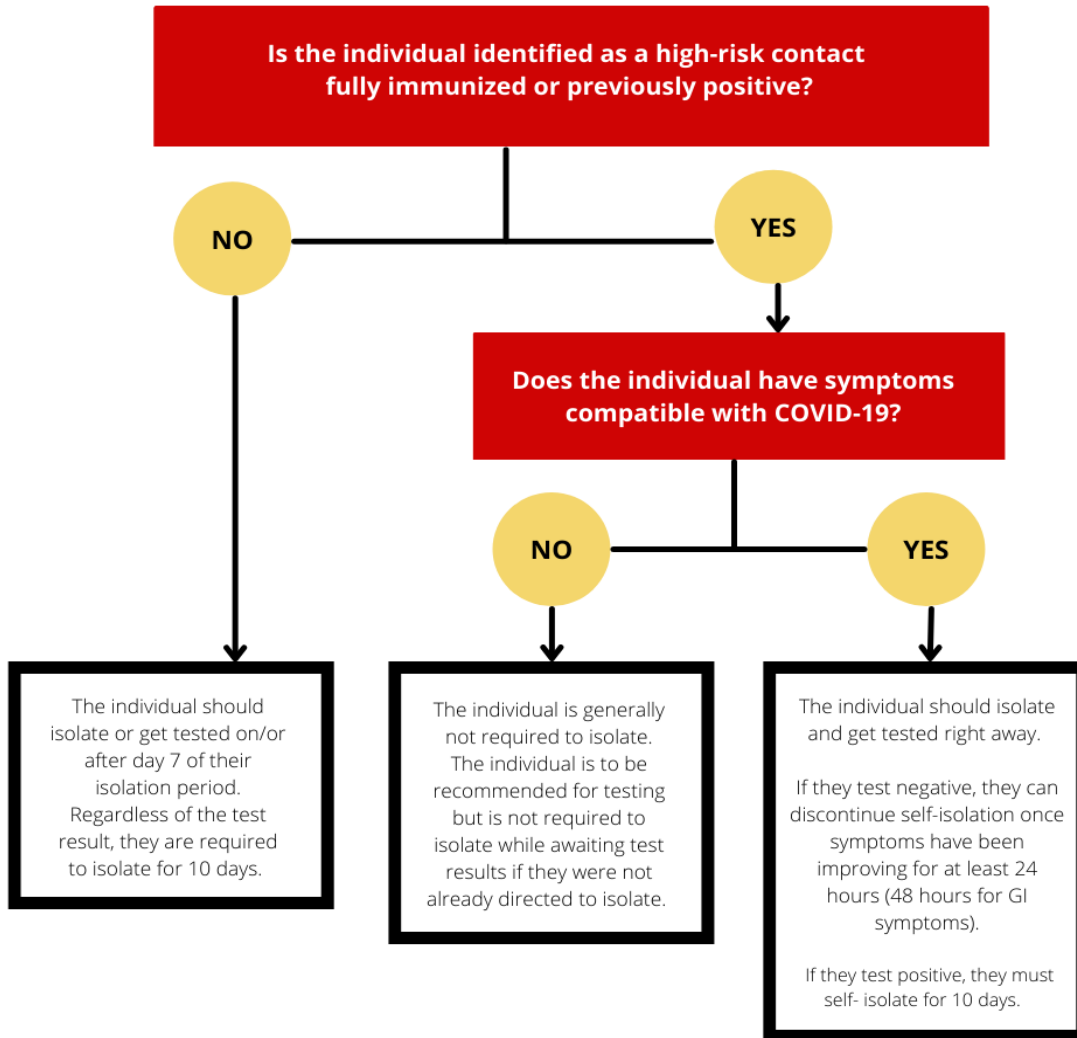


Flow Chart 1: Case and Contact Management in Hockey for High-Risk Contact

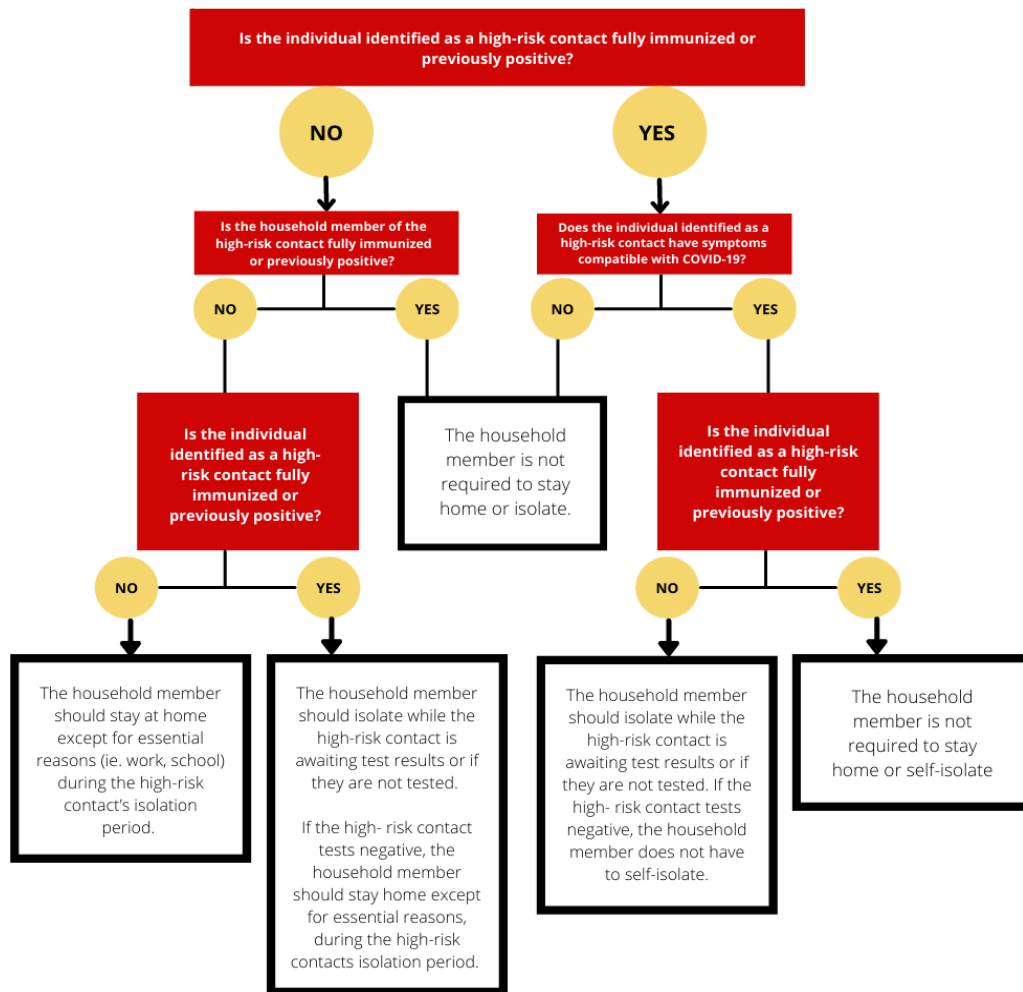
Adapted from Appendix 11 of *Management of Cases and Contacts Of COVID-19 in Ontario by the Government of Ontario*



For the purposes of case/contact/outbreak management, an individual is defined as fully immunized ≥ 14 days after receiving their second dose of a two-dose COVID-19 vaccine series or their first dose of a one-dose COVID-19 vaccine series that is listed for emergency use by the World Health Organization or approved by Health Canada. Individuals who are immunocompromised are excluded from this definition, in accordance with COVID-19 Fully Immunized and Previously Positive Individuals: Case, Contact and Outbreak Management Interim Guidance. For the purposes of case/contact/outbreak management, an individual is defined as previously positive if they were a confirmed case of COVID-19 where their initial positive result was ≤ 90 days ago AND they have been cleared from their initial infection. Individuals who are immunocompromised are excluded from this definition, in accordance with COVID-19 Fully Immunized and Previously Positive Individuals: Case, Contact and Outbreak Management Interim Guidance.

Flow Chart 2: Case and Contact Management in Hockey for Household Members of High-Risk Contacts

Adapted from Appendix 11 of [Management of Cases and Contacts Of COVID-19 in Ontario by the Government of Ontario](#)



For the purposes of case/contact/outbreak management, an individual is defined as fully immunized ≥ 14 days after receiving their second dose of a two-dose COVID-19 vaccine series or their first dose of a one-dose COVID-19 vaccine series that is listed for emergency use by the World Health Organization or approved by Health Canada. Individuals who are immunocompromised are excluded from this definition, in accordance with COVID-19 Fully Immunized and Previously Positive Individuals: Case, Contact and Outbreak Management Interim Guidance. For the purposes of case/contact/outbreak management, an individual is defined as previously positive if they were a confirmed case of COVID-19 where their initial positive result was ≤ 90 days ago AND they have been cleared from their initial infection. Individuals who are immunocompromised are excluded from this definition, in accordance with COVID-19 Fully Immunized and Previously Positive Individuals: Case, Contact and Outbreak Management Interim Guidance.